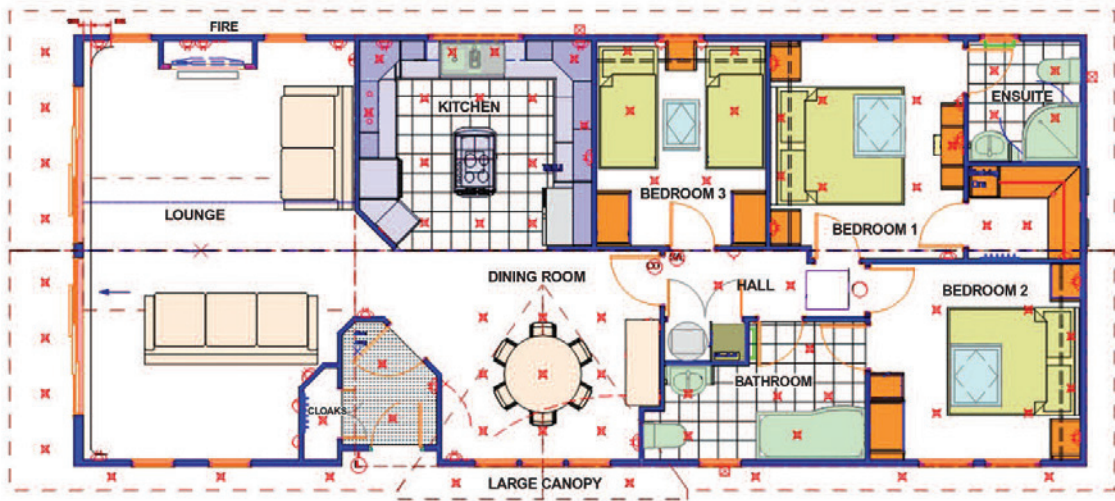




# RUDDING

HOLIDAY PARK

## Doral



**Name:** Doral on Repton Green

**Model:** Lissett Savannah

**Size:** 51' 1" x 22'

**Year:** 2014

**Bedrooms:** Three

**Facilities:** Fully furnished, large fitted kitchen and open plan dining area. Large lounge with bi-folding patio doors giving access to the large decked verandah with wooden furniture and hot tub. Double glazed windows, underfloor heating throughout, master bedroom with ensuite shower room and walk in wardrobe, two further bedrooms (one double, one twin) with fitted wardrobes, house bathroom with shower over bath.

To arrange a viewing  
call Toni Fernandes,  
Holiday Park Manager  
on 07900 901434

**£295,000**

Including Site fees to 31 January 2016